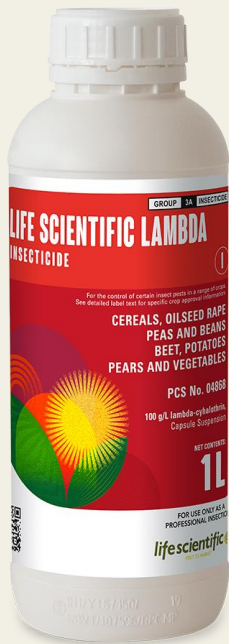


# life scientific

ENGINEERED BENEFITS

LIFE SCIENTIFIC LAMBDA



## LIFE SCIENTIFIC LAMBDA

LIFE SCIENTIFIC LAMBDA is a contact and ingested pyrethroid insecticide from Life Scientific for control of a wide range of pests in wheat, barley, rye, triticale, oats, oilseed rape, peas, field beans, potatoes, sugar and fodder beet, carrots, parsnips, broccoli, calabrese, Brussels sprouts, cabbage, cauliflower and pears.

The capsule suspension (CS) formulation of LIFE SCIENTIFIC LAMBDA means less exposure for the operator to the active ingredient when handling the product.

LIFE SCIENTIFIC LAMBDA contains 100g/L lambda-cyhalothrin

For more information including product label, safety data sheet and compatible tank-mixes see the Life Scientific website [ie.lifescientific.com](http://ie.lifescientific.com) or download the App to get product information direct to your phone.

## Product Comparability

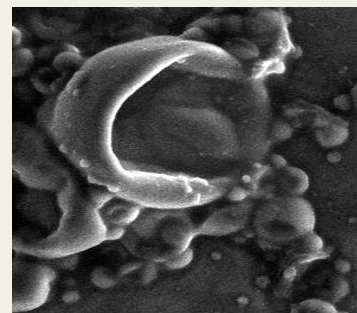
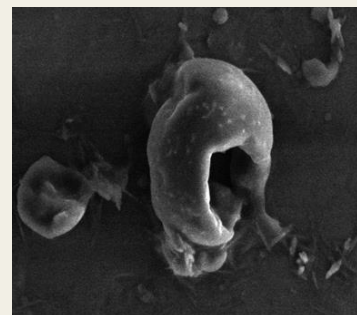
PRCD give all the Life Scientific reverse-engineered products approval based on comparability to the reference product.

This means LIFE SCIENTIFIC LAMBDA has been classed as comparable to the reference product Karate Zeon from pesticide chemistry, mammalian toxicology, ecotoxicology and efficacy perspectives.

It works in exactly the same way and gives the same results that you would expect from the reference product.

The chemists at Life Scientific have worked hard to ensure the LIFE SCIENTIFIC LAMBDA formulation behaves in the same way, so the capsules break down and release the active ingredient at the same rate, giving the same speed of activity and persistence as the reference product.

The electron microscopy images opposite show the capsules of Karate Zeon (top) and LIFE SCIENTIFIC LAMBDA (bottom).



## Insecticide Study

As part of our research into how to optimise aphid control, which is especially important following the loss of neonicotinoid seed dressings, Life Scientific commissioned Agrochemex to carry out a knockdown and persistence study in a replicated glasshouse trial.

A sensitive population of aphids (*Aphis fabae*) were introduced to bean plants, which were then sprayed with lambda-cyhalothrin insecticide.



Plants were sprayed with either LIFE SCIENTIFIC LAMBDA or Karate Zeon at a rate of 50ml in 200 litres of water.

Aphids were then counted at 3, 7 and 14 days after application.

As expected, no significant differences were apparent between LIFE SCIENTIFIC LAMBDA or Karate Zeon in terms of knockdown or persistence. However, it's always good to receive confirmation of product comparability between LIFE SCIENTIFIC LAMBDA and the reference product.



## About Life Scientific

We specialise in bringing high quality off-patent crop protection products to market. Our goal is to give our customers better options to meet their plant protection needs.

We can do this by being first to market with an off-patent alternative, or by designing innovative versions of current off-patent agrochemical products. Our scientists navigate complex organic and analytical chemistry and regulatory requirements to develop optimised formulations. Innovation is at the heart of everything we do. Our holistic approach and smart working practices ensure our products stand up to the most rigorous scientific and regulatory standards.

So, if it's under the Life Scientific brand you can be confident it's as effective as the current leading standards in the market.

LIFE SCIENTIFIC LAMBDA is a registered trademark of Life Scientific. LIFE SCIENTIFIC LAMBDA contains lambda-cyhalothrin.

All other products are those of other manufacturers where proprietary rights may exist. Use plant protection products safely. Always read the label and product information before use. For further product information including warning phrases and symbols refer to [www.lifescientific.com](http://www.lifescientific.com)